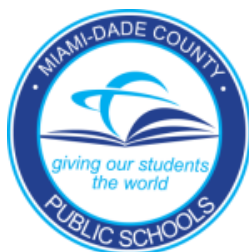


MIAMI DADE COUNTY PUBLIC SCHOOLS

**Division of Bilingual Education and World Languages
Adult ESOL Program**



CASAS For Students In The Classroom



What is CASAS?

CASAS stands for:

The **C**omprehensive **A**dult **S**tudent **A**ssessment **S**ystem (CASAS)

The CASAS is for students whose native language is not English. It measures English skills in

- **Reading**



- **Listening**



Who has to take the CASAS Test?



The Florida Department of Education (DOE) requires students take placement tests before entering an ESOL program.

All students registered in Miami- Dade County Public Schools (M-DCPS) Adult ESOL Programs will take the proper standardized Comprehensive Adult Students Assessment System (CASAS) assessment.

You can enroll in ESOL no matter what score you earn in CASAS.

Adult Centers use your CASAS score to:

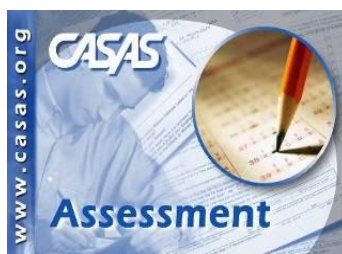
- ➡ Determine your English skill level
- ➡ Place you in the appropriate level to begin your studies



Beginning at the right level is critical to learning English. We want you to succeed. By knowing what areas you need help in, your instructors can work with you to strengthen your skills.

How Can I Learn More about the CASAS?

You can talk with a school counselor or your teacher for more information.



Assessment Process Summary:

1. Screening
2. Pre-Test
3. Instruct
4. Post-Test

These are the ranges of the CASAS scores and levels:

SCALE SCORE	ADULT ESOL COURSE LEVEL
< 180 AND LITERATE IN NATIVE LANGUAGE	FOUNDATIONS
181 – 190	LOW BEGINNING
191 – 200	HIGH BEGINNING
201 – 210	LOW INTERMEDIATE
211 – 220	HIGH INTERMEDIATE
221 – 235	ADVANCED

Your placement level is based on the lower of the two scores (reading and listening).

Example: Reading Score = 192

Listening Score = 187

Level= Low Beginning

Make-Up Exams:

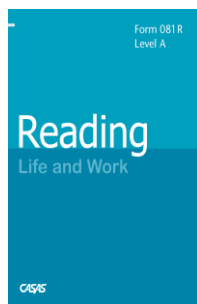


Sometimes circumstances force students to miss a scheduled test; however, arrangements can be made with instructors and the Assessment and Testing Center to make-up a missed exam. Make-up exams are very important.

CASAS Test Formats:






CASAS eTest



Paper and Pencil

CASAS LISTENING TESTS

The listening test is used to determine a student's ability to understand spoken English. There are three levels:

Level A Item Types	Level B Item Types	Level C Item Types
 <ul style="list-style-type: none"> Picture Prompt – repeated Prompts in a test booklet Comprehension Question – repeated <ul style="list-style-type: none"> Conversations between two people Phone message recordings and conversations Recorded announcements and messages Predict Next Line – repeated <ul style="list-style-type: none"> Finish conversation between two people <p>Testing Time: 35 minutes</p>	 <ul style="list-style-type: none"> Comprehension Question – repeated <ul style="list-style-type: none"> Conversations between two people Phone message recordings and conversations Recorded announcements and messages Predict Next Line – repeated <ul style="list-style-type: none"> Finish the conversation between two people Identify True Statement – not repeated <ul style="list-style-type: none"> Which is correct? Interpret statements or conversations <p>Testing Time: 40 minutes</p>	 <ul style="list-style-type: none"> Comprehension Question – not repeated <ul style="list-style-type: none"> Conversations between two people Phone message recordings and conversations Recorded announcements and messages Identify True Statement – not repeated <ul style="list-style-type: none"> Which is correct? Interpret statements or conversations Predict Next Line – not repeated <ul style="list-style-type: none"> Finish the conversation between two people <p>Testing Time: 30 minutes</p>

Level A

All items are repeated

- **Picture Prompts** and the questions
- **Comprehension Questions-** Conversations between two people. Phone message recordings and recorded announcements
- **Predict Next Line-** Finish conversation between two people

35 Minutes

Level B

- **Comprehension Questions- Repeated** Conversations between two people. Phone message recordings and recorded announcements
- **Predict Next Line- Repeated** Finish conversation between two people

Identify True Statement Not Repeated- Which is correct?

40 Minutes

Level C

No repetition

- **Comprehension Questions-** Conversations between two people. Phone message recordings and recorded announcements
- **Identify True Statement** Which is correct?
- **Predict Next Line-** Finish conversation between two people

30 Minutes

You can practice online at:

www.casas.org

CASAS Web Site - Life and Work Reading Sample Test Items - Microsoft Internet Explorer

Address: <https://www.casas.org/home/index.cfm?fuseaction=home.showContent&MapID=3229>

Home Contact Downloads Forums Jobs Sitemap

Search Go

Change font size: A- A+

Welcome, Veronica / [View preferences](#) / [Logout](#)

Powered by Google

Download CASAS Catalog
Download CASAS Order Form

About CASAS
Products and Services
Ordering Information
Sample Test Items for Classroom Use
Life and Work Reading Sample Test Items
Life and Work Listening Sample Test Items
Government and History for Citizenship Sample Test Items
Got CASAS eTests? CASAS eTests Sampler

Home » Products and Services » Sample Test Items for Classroom Use » Life and Work Reading Sample Test Items

Life and Work Reading Sample Test Items

Use these sample test items to:

- familiarize students with CASAS items
- give students practice in taking a CASAS test
- make future testing go more smoothly
- help reduce student test-taking anxiety

These items are samples to familiarize students with CASAS test formats. Since they are not actual tests, they are not predictors of student performance, and are not valid for level placement, assessment, or for reporting standardized scores.

[Log in](#) to download the reading sample test items in printable format or in a PowerPoint format for use in computer labs and classrooms with teacher/demonstration computers.

We appreciate the suggestion and acknowledge the initial conversion to PowerPoint by North Orange Community College District instructors, Cindi Badi and Ngoc Luu. To use the PowerPoint presentations in your classroom, please follow these directions:

- Save the file to your desktop.
- Open the file. If the file does not automatically open as a PowerPoint Show, select "Slideshow" from the "View" menu.
- Use the "arrow" graphic to advance through the questions.
- Click on the letter of the answer to see if it is correct or incorrect. Be sure to click on the letter only; do not click on the box or the answer statement.
- Click on the "return arrow" graphic to return to the question.

CASAS Web Site - Life and Work Reading Sample Test Items - Microsoft Internet Explorer

Address: <https://www.casas.org/home/index.cfm?fuseaction=home.showContent&MapID=3229>

Life and Work Listening Sample Test Items
Government and History for Citizenship Sample Test Items
Got CASAS eTests? CASAS eTests Sampler

QuickSearch Online
Life and Work Listening FAQs
Test Support Materials
Case Studies
CASAS eTests
Employability (ECS)
Workforce Learning Systems (WLS)
Workplace Speaking
Life and Work
Workforce Skills Certification
Citizenship
Life Skills
Secondary Level Assessment

classrooms with teacher/demonstration computers.

We appreciate the suggestion and acknowledge the initial conversion to PowerPoint by North Orange Community College District instructors, Cindi Badi and Ngoc Luu. To use the PowerPoint presentations in your classroom, please follow these directions:

- Save the file to your desktop.
- Open the file. If the file does not automatically open as a PowerPoint Show, select "Slideshow" from the "View" menu.
- Use the "arrow" graphic to advance through the questions.
- Click on the letter of the answer to see if it is correct or incorrect. Be sure to click on the letter only; do not click on the box or the answer statement.
- Click on the "return arrow" graphic to return to the question.

If you have difficulty accessing the PowerPoints or if you have any questions, please contact us at casas@casas.org.

Printable Version

- [Level A](#)
- [Level B](#)
- [Level C](#)
- [Level D](#)

PowerPoint Version

- [Level A](#)
- [Level B](#)
- [Level C](#)
- Level D - Coming Soon!

[Contact Us](#) | [Feedback](#)

PREPARE FOR THE POST TEST



- **Be on Time**
- **Bring #2 Pencil if taking a pen and paper test**
- **Practice bubbling Practice Sheet if taking pen and paper test**
- **Think of the test as an opportunity to show what you know-a chance to see your progress**
- **Rest the night before the test**
- **Turn cell off**
- **Do not bring any calculators, dictionaries, or books**
- **Do not leave the room until you are dismissed**

Reading-Sample Test Items- Level A

Practice 1 (Pencil and Paper)

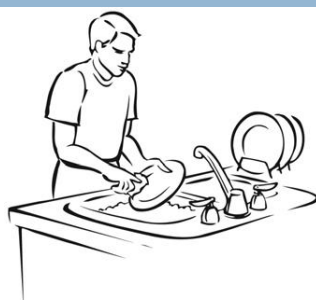


What is he doing?

- A He's washing the dishes.
- B He's watching the children.
- C He's watering the plants.
- D He's cleaning the table.

CASAS etest

Practice 1



What is he doing?



<u>A</u>	He's washing dishes.	<u>C</u>	He's watering plants.
<u>B</u>	He's watching children.	<u>D</u>	He's cleaning the table.

Reading-Sample Test Items- Level B

Practice 1 (Pencil and Paper)

Please sign in and
have a seat. We will
call your name

What do you do first?

- A. call in
- B. sign in
- C. sit down
- D. say your name

CASAS etest

Practice 1



Please sign in and
have a seat. We will
call your name.

What do you do first?



<u>A</u>	call in	<u>C</u>	sit down
<u>B</u>	sign in	<u>D</u>	say your name

Reading-Sample Test Items- Level C

Practice 1 (Pencil and Paper)

TeleHealth Service

Now you can obtain health information 24 hours a day directly from your home telephone. Call in to our toll-free number and choose one of over 200 recorded messages that give you information on everything from common diseases to immunizations to lowering cholesterol.

What does TeleHealth offer?

- A. home health care
- B. information on health
- C. a 24-hour appointment line
- D. direct access to medical staff

CASAS etest

Practice 1

TeleHealth Service

Now you can obtain health information 24 hours a day directly from your home telephone. Call in to our toll-free number and choose one of over 200 recorded messages that give you information on everything from common diseases to immunizations to lowering cholesterol.



What does TeleHealth offer?

A	home health care	C	a 24-hour appointment line
B	information on health	D	direct access to medical staff

PREPARE FOR THE TEST

Here are some additional online sites you can use to increase your reading and listening skills:

www.esl-lab.com

www.eflclub.com

www.starfall.com

www.livemocha.com

www.mansioningles.com

www.englishclub.com

www.a4esl.org

www.seminolecasastest.edu

<http://www.scc-fl.edu/adulted/els/pett/listening.htm>

<http://www.pbclibrary.org/mousing/mouserercise.htm>

(To practice using a computer mouse)

www.thewclc.ca

(Learning Edge)

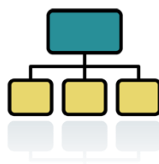
PREPARE FOR THE TEST

Test questions are presented in a variety of task areas, or display formats.

You can prepare for the test by practicing using the different formats.

Reading questions could have:

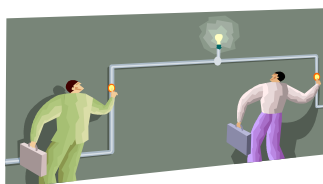
1. Forms
2. Charts, maps, consumer billings, matrices, graphs, or tables
3. Stories, articles, paragraphs, sentences, directions, or pictures
4. Signs, price tags, ads, or product labels
5. Measurement scales and diagrams



PREPARE FOR THE TEST

Listening questions could have:

1. Picture prompt
2. Comprehension question
3. Predict next line of dialogue
4. Identify true statement based on prompt



Example:

1. Who is speaking?

Listen to a conversation where you will identify the speaker.

"This is the office of Dr. Perez, we are sorry but we have to cancel your appointment for tomorrow and re-schedule it for next week."

Who is speaking?

- a. A nurse
- b. A doctor
- c. An office assistant
- d. A patient

2. Which is the best answer to the following statement?

Good Morning, how are you?

1. It is a good day.
2. I'm fine thank you and you?
3. My sister is doing well.

GOALS

Setting goals will help you focus and accomplish your dreams. Students are encouraged to write down an educational goal at the beginning of their studies.

My Persistence Plan

MY GOAL

What :

When:

How:

Where:



This report will tell you how you did on your test. Ask your teacher to discuss with you.

02/02/2004
14:10:34

Student Performance by Competency
4908 - Rolling Hills Adult School
Test Dates between 07/01/2003 and 06/30/2004

Agency: 4908 - Rolling Hills Adult School
Site: 2 - South Campus
Class: 6612 - ESL Intermediate
Course:
Form: 033R - Life Skills Reading Level B
Student: Barroscio, Manuel - 599661104

Teacher: 213 - White, Kelly

Instructional Program: ESL
Test Date: 09/04/2003
Raw Score: 15
Scale Score: 204

Item	Comp No.	Correct?	Competency Description
1	2.2.1.2	Yes	Ask for, give, follow, or clarify directions
2	2.2.1.2	Yes	Ask for, give, follow, or clarify directions
3	2.1.1.2	Yes	Use phone directory and related publications to locate info.
4	2.1.1.2	Yes	Use phone directory and related publications to locate info.
5	1.8.2.1	Yes	Interpret bank procedures, forms, writing checks
6	1.8.2.1	Yes	Interpret bank procedures, forms, writing checks
7	1.2.1.4	No	Interpret ads, labels, charts, etc to select goods, services
8	1.2.1.4	No	Interpret ads, labels, charts, etc to select goods, services
9	2.6.4.2	Yes	Interpret, order from restaurant menus, and compute costs
10	2.6.4.2	No	Interpret, order from restaurant menus, and compute costs
11	4.1.2.1	Yes	Follow proc. for applying for a job, incl. application forms

1 of 2

Unknown Zone

This column shows the description of the item

This column shows if the answer was correct

Your teacher can help you understand this report, and can show you the Florida ESOL Standards to compare with the CASAS Comp. No.

Congratulations

You Are on Your Way to

SUCCESS!

