



## CONNECTIONS...For ELCATE Teachers

*Instructional strategies and information for  
English Literacy for Career and Technical Education (ELCATE) teachers  
Preparing our students for the 21st Century !*

### *The United States Department of Labor Occupational Outlook Handbook is Out !*

This is the Nation's premier source for career information! The profiles features hundreds of occupations and describes What They Do, Work Environment, How to Become One, Pay, and more. Each profile also includes employment projections for the 2010–20 decade. Total employment is expected to increase by 20.5 million jobs from 2010 to 2020, with 88 percent of detailed occupations projected to experience employment growth. Industries and occupations related to health care, personal care and social assistance, and construction are projected to have the fastest job growth between 2010 and 2020. Jobs requiring a master's degree are expected to grow the fastest, while those requiring a high school diploma will experience the slowest growth over the 2010–20 timeframe. Slower population growth and a decreasing overall labor force participation rate are expected to lead to slower civilian labor force growth. See link: <http://www.bls.gov/ooh/>

## *Teaching Personal Finance*

<http://www.nefe.org/>

Check out The National Endowment for Financial Education (NEFE) is the leading private nonprofit 501(c)(3) national foundation dedicated to inspiring empowered financial decision making for individuals and families through every stage of life. With more than a quarter-century of dedication to the public good, NEFE continues its legacy of service with commitment to providing financial education and practical information to people at all financial levels, including: 1) Adult financial education resources, 2) Training tools from the classroom to the workplace and 3) Research and consumer surveys.



## ACADEMIC RIGOR

**BASED ON THE ARTICLE BY JAMES RICKY COX, PHD  
FROM FACULTY FOCUS**

Most faculty aspire to high standards for their students, but I do not read much about rigor in the educational literature these days. It may be that many faculty think rigor is an implied part of the collegiate experience. It almost seems that any mention of rigor or challenge has become "educationally incorrect" in the literature of scholars who promote the reform of higher education and place an emphasis on learning over teaching. Moving away from the traditional lecture format does not require one to abandon rigor or high expectations, although this is rarely addressed in reform-minded manuscripts. I am convinced me that my job is to provide what has been termed "productive discomfort" I want my students to wrestle with ideas that at times disorient them and other times make them want to know more about their world. I strongly believe there is a need to push students to maximize their potential and learning capacities.

*What do you think? Do you agree or disagree?*

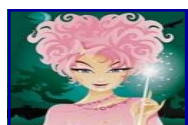
## Top Ice Breakers for Adults

Ice breakers are the best way to help your students get to know each other, to break the ice and create bonding among your students. It's even more important to choose an ice breaker that won't backfire on you. Most adults don't want to play silly games. Choose one of the top ten and you'll be a hit ! Remember that ice breakers are also a great way to energize your classroom when the doldrums set in, or to introduce a new topic.

**People Bingo** : People Bingo is one of the most popular ice breakers because it's so easy to customize for your particular group and situation, and everyone knows how to play it. Make your own bingo cards with our lists of characteristics, or use an online card maker. make a list of 25 interesting traits that describe different aspects of them, things like, "plays the bongos," "once lived in Sweden," "has a karate trophy," "has twins," "collects children's art," "has a tattoo." If you don't know your participants, make a list of more general traits like "drinks tea instead of coffee", "loves the color orange," "has two cats," "drives a hybrid," "went on a cruise in the last year." You can make these easy or difficult depending on how much time you want the game to take. There are lots of places online where you can type in your traits and print your own customized cards. Some are free; some are not.



**Expectations** : Expectations are powerful, especially when you're teaching adults. Understanding your students' expectations of the course you're teaching is key to your success. Make sure you know what your students expect with this expectations ice breaker. Materials Needed: A flip chart or white board, and markers



**If You Had a Magic Wand** : If you had a magic wand, what would you choose to change? Pass a magic wand around your classroom, or any other cool magical item, and generate some energy!

**Photo Scavenger Hunt**: A picture is worth a thousand words. Almost everyone has a photo or two in their wallet or on their phone, especially when you've got a room full of adults, or even better, baby boomers with grandchildren. The photo hunt is on!

## Employ Florida

**Employ Florida** links all of Florida's state and local workforce services and resources. The partners are [Workforce Florida](#), the state policy and oversight board, and the [Department of Economic Opportunity](#), the state agency which administers workforce funds. At the local level, there are [24 regional workforce boards](#) that administer more than 80 "[one-stop centers](#)." The **Employ Florida** toll free number is 1-866-FLA-2345.

***SoftSchools.com***

SoftSchools.com provides free math worksheets, free math games, grammar quizzes and free phonics worksheets and games. Worksheets and games are organized by grades and topics. These printable math and phonics worksheets are auto generated, <http://www.softschools.com/>

## ELCATE May 2012



The ELCATE programs currently have 950 students and growing! The adult centers offering ELCATE are : DA Dorsey Adult, The English Center, Lindsey Hopkins, Miami Beach Adult, Miami Senior Adult , South Dade Adult and W.M. Turner Tech. Center. *The ELCATE Draft Standards are available at:*

[http://www.fldoe.org/workforce/dwdframe/ad\\_frame.asp](http://www.fldoe.org/workforce/dwdframe/ad_frame.asp)